



Working together for
better health and care

NHS

**Thurrock
Clinical Commissioning Group**

“For Thurrock in Thurrock” Transformation Programme Update

Health and Wellbeing Board
Thursday 15th September 2016

*Vision Statement: The Health and care experience of the people of Thurrock
will be improved as a result of our working effectively together.*

For Thurrock in Thurrock – Background



Thurrock Transformation Plan: Delivering our Vision

January 2016

Thurrock Transformation Programme:
Delivering our Vision
Part II Board January 2016
Health and Wellbeing Board February 2016
Part 1 Board March 2016

Thurrock Transformation Programme:
Bringing the Vision to Life
Part II Board March 2016
Integrated Commissioning Executive March 2016

Thurrock Transformation Programme: Bringing our Vision to Life

1 Purpose and background

The purpose of this paper is to:

- Provide an update on progress as we move through the first phase of our transformation programme
- Seek the Board's approval for the proposed investment in the enhanced integrated care teams to support care closer to or at home.
- Propose a revised approach towards achieving our new model of care.

In summary, our vision and the aspiration of developing an MCP remain as set out in the Transformation Plan however an alternative to structured dialogue has emerged from recent system partner engagement which could be the perfect vehicle to help us achieve that end in a more collaborative and timely way.

2 Overview

The Thurrock Transformation Plan: Delivering our Vision, shared at the January Board is now coming to life as we work through the finer detail of the programme.

Agreement to the proposed changes in how and where intermediate care will be delivered is gaining strong support from the public and stakeholders alike, and confidence amongst system partners on the programme's ability to deliver is growing at a pace.

We know that successful delivery of our vision will require a range of out of hospital services which are based around local patient need as opposed to pre-determined service models, and prioritise domiciliary care packages over bed based care but offer bed based care where required.

A notable achievement on that journey was the receipt in early March of a joint proposal from our community and mental health providers setting out their views on the required workforce capacity and level of investment required to fund fully integrated coordinated care closer to or at home.

We are currently reviewing the proposal for affordability but are confident that we will (by the end of March) have reached agreement on the required level of investment in order for recruitment to then commence.

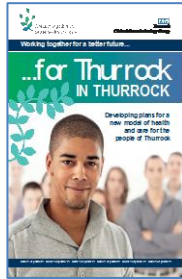
3 Engaging System Partners

Our journey since January has also seen us engaging with system partners, not just through meetings and discussions to firm up plans but also through Exec-to-Exec Meetings to share our Vision and gauge support.

For Thurrock in Thurrock - Plan on a Page

Initial engagement

- Healthwatch Led
- 22 February to 31 March
- Report by 14 April
- Public Events
- Patient Champion
- Patient Panel



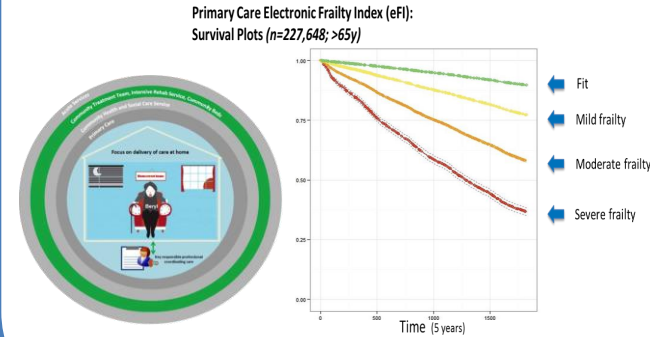
For Thurrock in Thurrock

- 4 localities + TCH Regen.



Enhanced ICTs

- Supporting people like Beryl
- Using eFI to support CCPs



Primary Care Estate

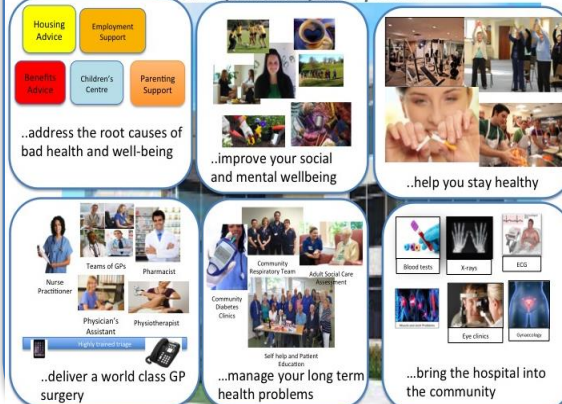
- Health Living Centres
- Tilbury + Purfleet



Primary Care Estate

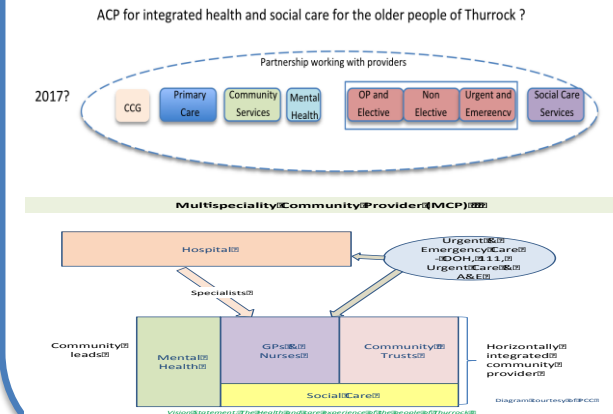
- Blueprint for Services

A 21st century healthy living centre, based on your needs that works in partnership with you to...



New Model of Care

- Accountable Care Partnership
- Hempson's workshop



For Thurrock in Thurrock ... Public engagement

People who live in the area should have the opportunity to have medical treatments locally, so that relatives can visit and follow up care be provided without gaps in services.

Where possible, intermediate care should be local to family so they can visit. Each case should be individually assessed not only for the patient's health but their well being within the family.

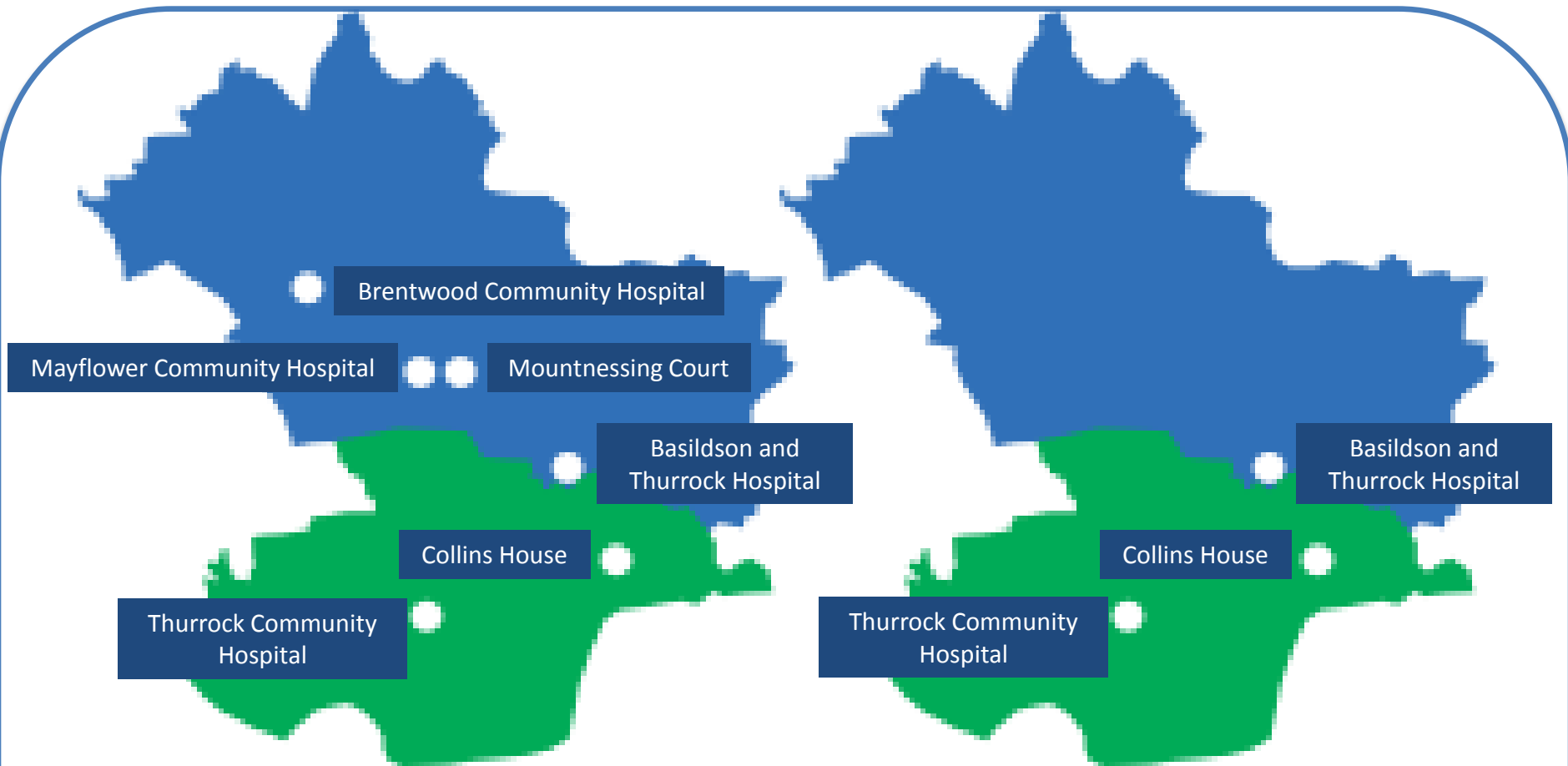
This would improve ease of treatment - local care for local people, easily accessible to family and links so they are not isolated.



Public engagement (2)

- Healthwatch Led
- 22 August to 30 September
- Feedback Report by 14 October
- Target 0.5% of our population

For Thurrock in Thurrock ... Intermediate care beds



From: 49 beds across 6 sites **To:** 32 beds at Thurrock Community Hospital
+5 additional beds at Collins House
37 beds “For Thurrock in Thurrock”

For Thurrock in Thurrock ... Investing in care in our community

Additional £800,000 invested



Extended
Primary Care



Specialist Nursing
and Therapists

ThurrockCVS

Social
Prescribing



Housing, benefits and
employment support



Local Area
Coordinators (LACs)

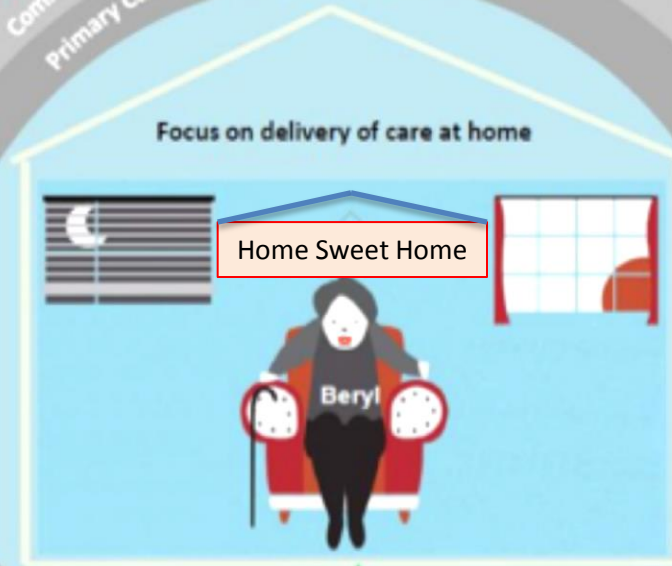
Acute Services

Community Treatment Team, Intensive Rehab Service, Community Beds

Community Health and Social Care Service

Primary Care

Focus on delivery of care at home



Home Sweet Home



Key responsible professional
coordinating care

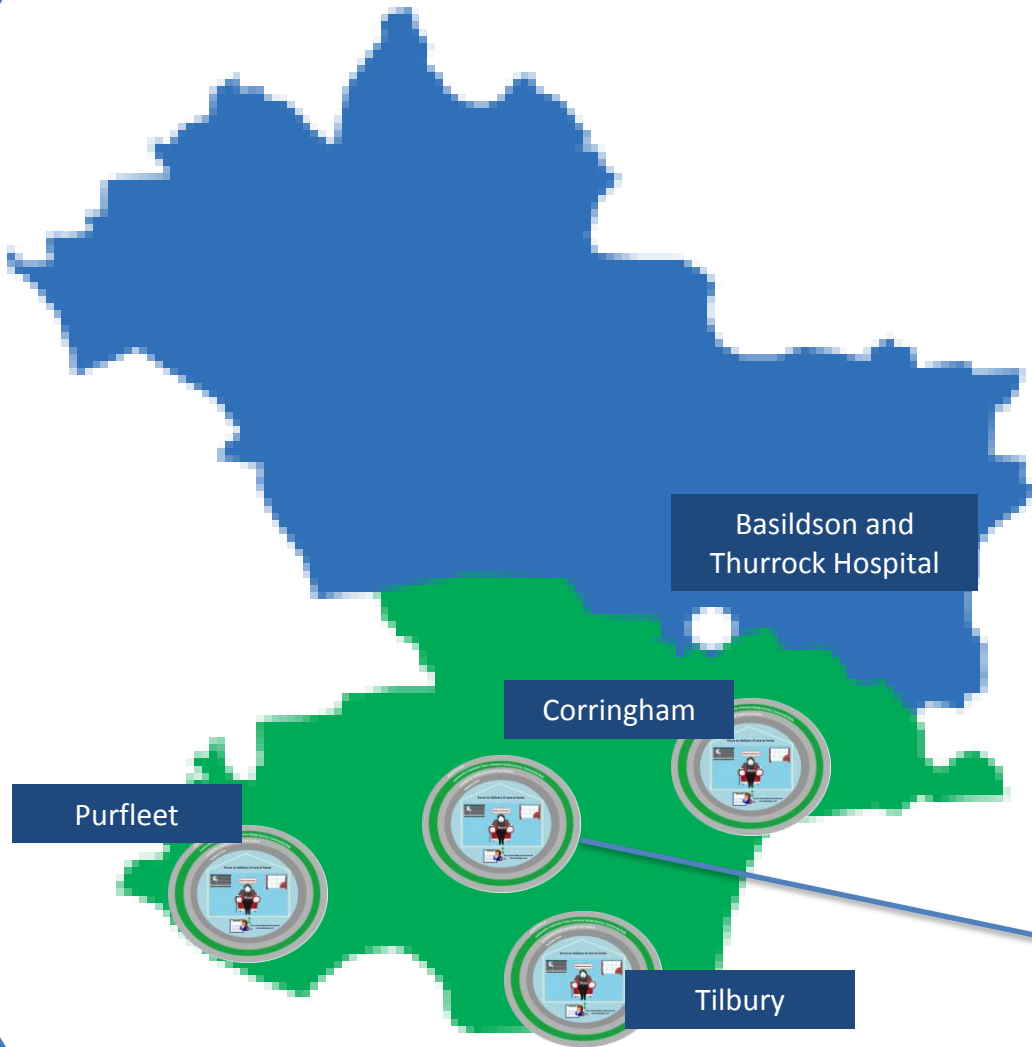


Key Responsible
Professional
Coordinating Care



Consultant
Geriatrician Provision

For Thurrock in Thurrock ... Locality based services



21st Century Healthy Living Centers



Thurrock Community Hospital

For Thurrock in Thurrock ... In partnership with our public

Developing the blueprint for services ...

Housing Advice

Employment Support

Benefits Advice

Children's Centre

Parenting Support

Addressing the root cause of bad health and wellbeing



Improving social and mental wellbeing



Helping our population stay healthy



Delivering a world class GP Surgery



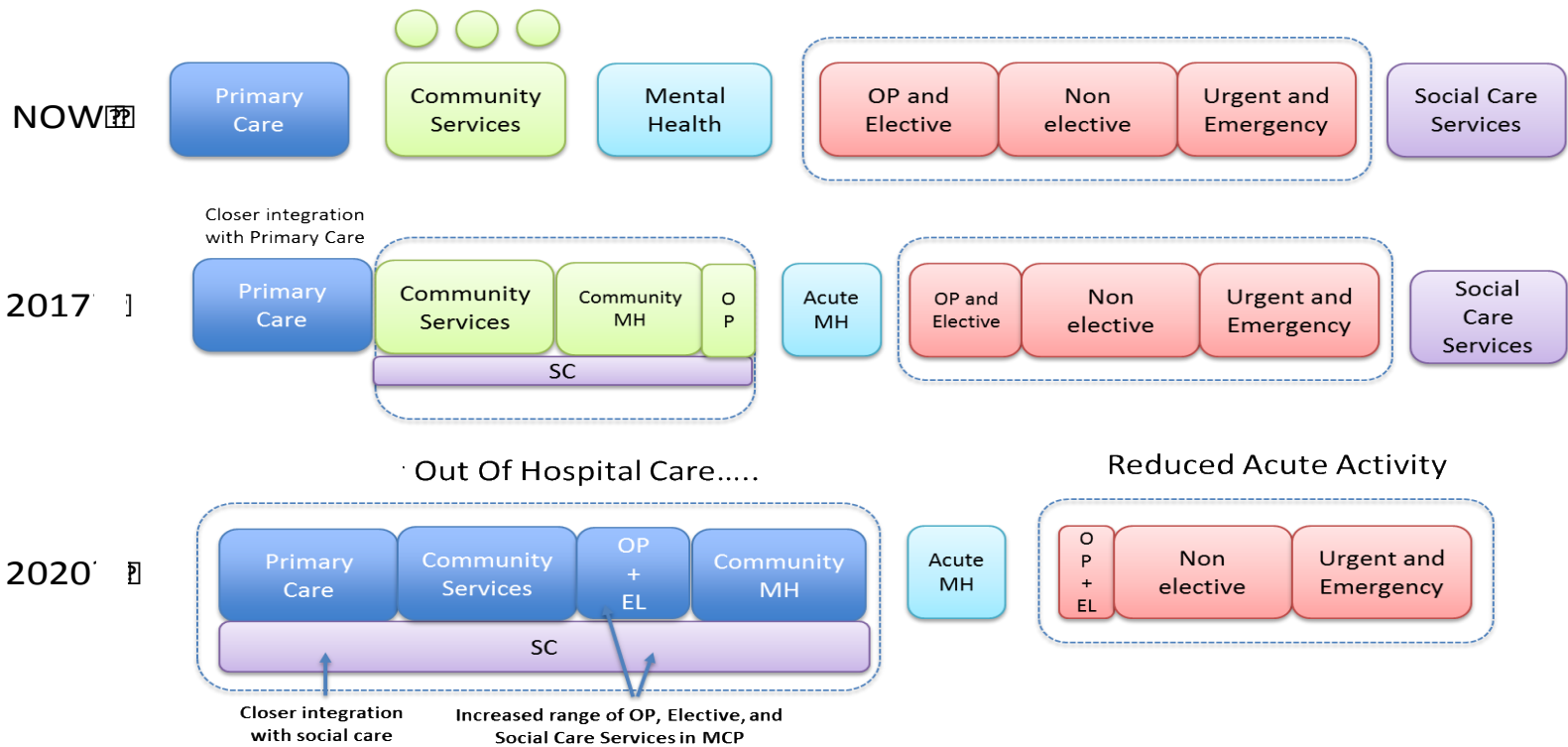
Managing long term health problems



Bringing the hospital into the community

For Thurrock in Thurrock – In partnership with our providers

RouteMap: What might this journey look like in Thurrock?



Vision Statement: The Health and care experience of the people of Thurrock will be improved as a result of our working effectively together.

For Thurrock in Thurrock - Transformation timeline

September?	March?	March?	March?	March?

Detailed work is underway to agree the scope of services to be included within each phase.

People living with Frailty?
Mental Health?
Community?
Social Care?

Children's Services?

This will inform commissioning intentions going forward.

Primary Care*?

Acute?**

* Development of the Locality Health Living Centres planned for Tilbury and Purfleet, the NELFT build in Corringham, and Thurrock Community Hospital site.

** Acute Services and Service Configuration

For Thurrock in Thurrock – Leading the way

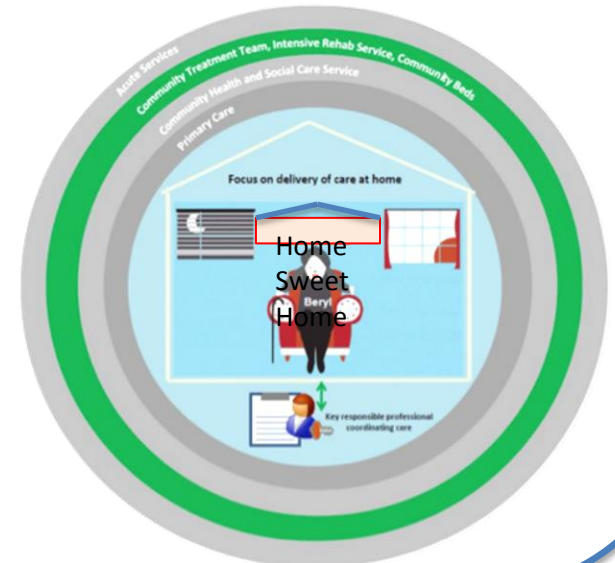
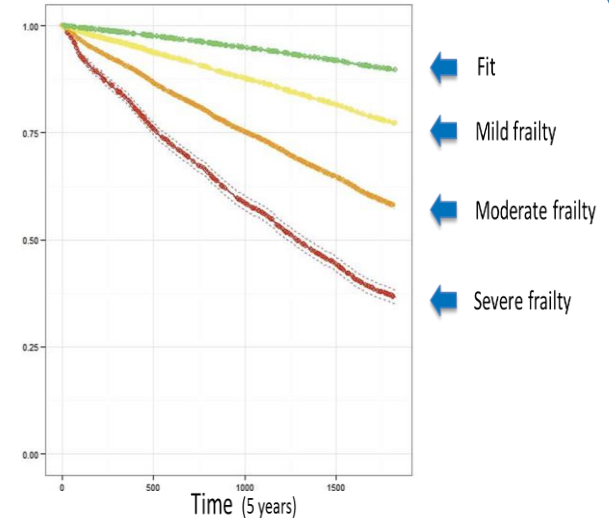
The Frailty Workstream:

4 key streams of work:

- Identification and Care Planning
- Proactive Care Delivery
- Frailty Assessment Unit
- End of Life

Primary Care Electronic Frailty Index (eFI):

Survival Plots ($n=227,648$; $>65y$)



For Thurrock in Thurrock – Strengthening strategic links

Health and Wellbeing Strategy

5 key principles:

Joint health and wellbeing strategy

Prevention and early intervention

Building strong and sustainable communities

Strengthening the mental and emotional

Health and social care transformation

Ensure that all agencies work together to deliver services that collectively improve the lives of all children and young people, ensuring that every child in Thurrock regardless of their circumstances has access to the best services and outcomes

THURROCK JOINT HEALTH AND WELLBEING STRATEGY 2016 - 2021



Adding Years to Life and Life to Years

